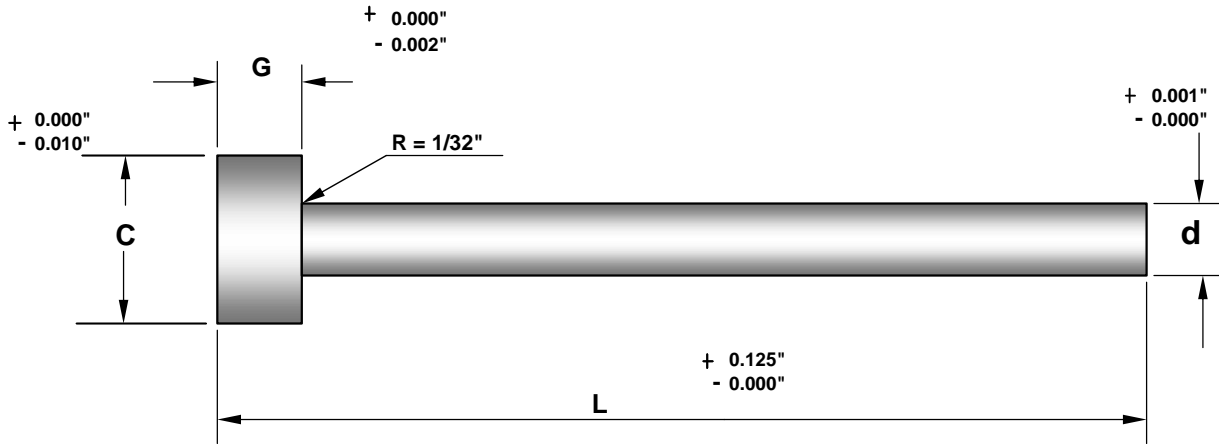


PERNOS CORAZONEROS



No. CATALOGO	d		C		G		L					
	DIAM. PERNO		DIAM. CAB.		GRUESO CAB.		LONGITUDES		EXISTENTES			
	PULG.	MM	PULG.	MM	PULG.	MM	PULG.	MM	PULG.	MM	PULG.	PULG.
CAD-93	3/32"	2.381	1/4"	6.35	1/8"	3.175	3"	76.2	6"	152.4	10"	254
CAD-109	7/64"	2.778	1/4"	6.35	1/8"	3.175	3"	76.2	6"	152.4	10"	254
CAD-125	1/8"	3.175	1/4"	6.35	1/8"	3.175	3"	76.2	6"	152.4	10"	254
CAD-140	9/64"	3.571	1/4"	6.35	1/8"	3.175	3"	76.2	6"	152.4	10"	254
CAD-156	5/32"	3.968	9/32"	7.143	5/32"	3.968	3"	76.2	6"	152.4	10"	254
CAD-187	3/16"	4.762	3/8"	9.525	3/16"	4.762	3"	76.2	6"	152.4	10"	254
CAD-218	7/32"	5.556	13/32"	10.318	3/16"	4.762	3"	76.2	6"	152.4	10"	254
CAD-250	1/4"	6.35	7/16"	11.112	3/16"	4.762	3"	76.2	6"	152.4	10"	254
CAD-281	9/32"	7.143	7/16"	11.112	1/4"	6.35	3"	76.2	6"	152.4	10"	254
CAD-312	5/16"	7.937	1/2"	12.7	1/4"	6.35	3"	76.2	6"	152.4	10"	254
CAD-343	11/32"	8.731	9/16"	14.287	1/4"	6.35	3"	76.2	6"	152.4	10"	254
CAD-375	3/8"	9.525	5/8"	15.875	1/4"	6.35	3"	76.2	6"	152.4	10"	254
CAD-406	13/32"	10.318	11/16"	17.462	1/4"	6.35	3"	76.2	6"	152.4	10"	254
CAD-437	7/16"	11.112	11/16"	17.462	1/4"	6.35	3"	76.2	6"	152.4	10"	254
CAD-500	1/2"	12.7	3/4"	19.05	1/4"	6.35	3"	76.2	6"	152.4	10"	254

LOS PERNOS CORAZONEROS **BOTA-MEX** SE FABRICAN EN ACERO PARA TRABAJO EN CALIENTE **AISI-H13**. TEMPLADOS A UNA DUREZA DE **50 - 55° Rc**.

LA CABEZA HA SIDO FORJADA Y RECOCIDA PARA UNA ALTA TENACIDAD, ES TAMBIEN FACILMENTE MAQUINABLE.